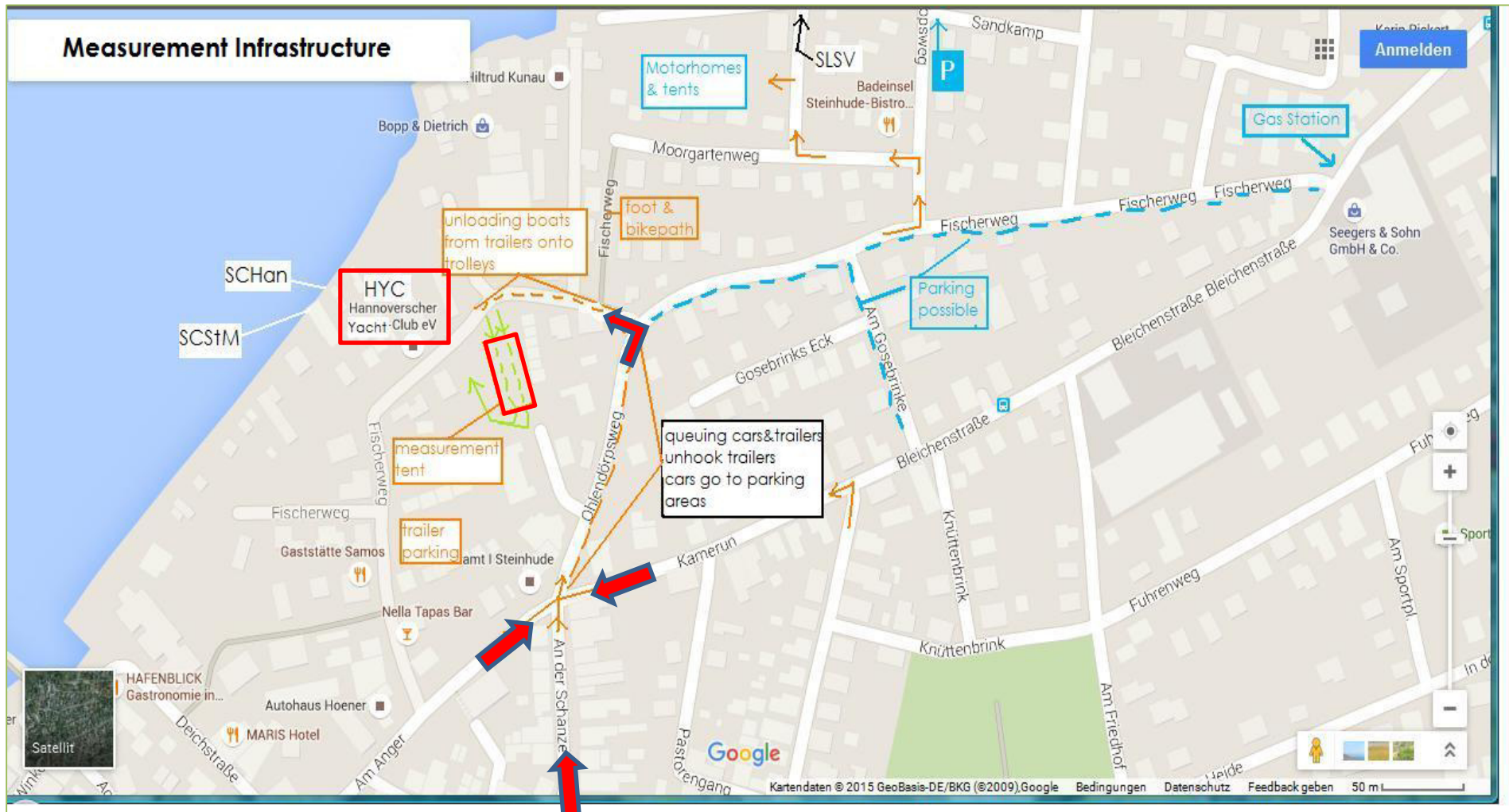





# Measurement

## Measurement

Location, Arrival, Measurement Area

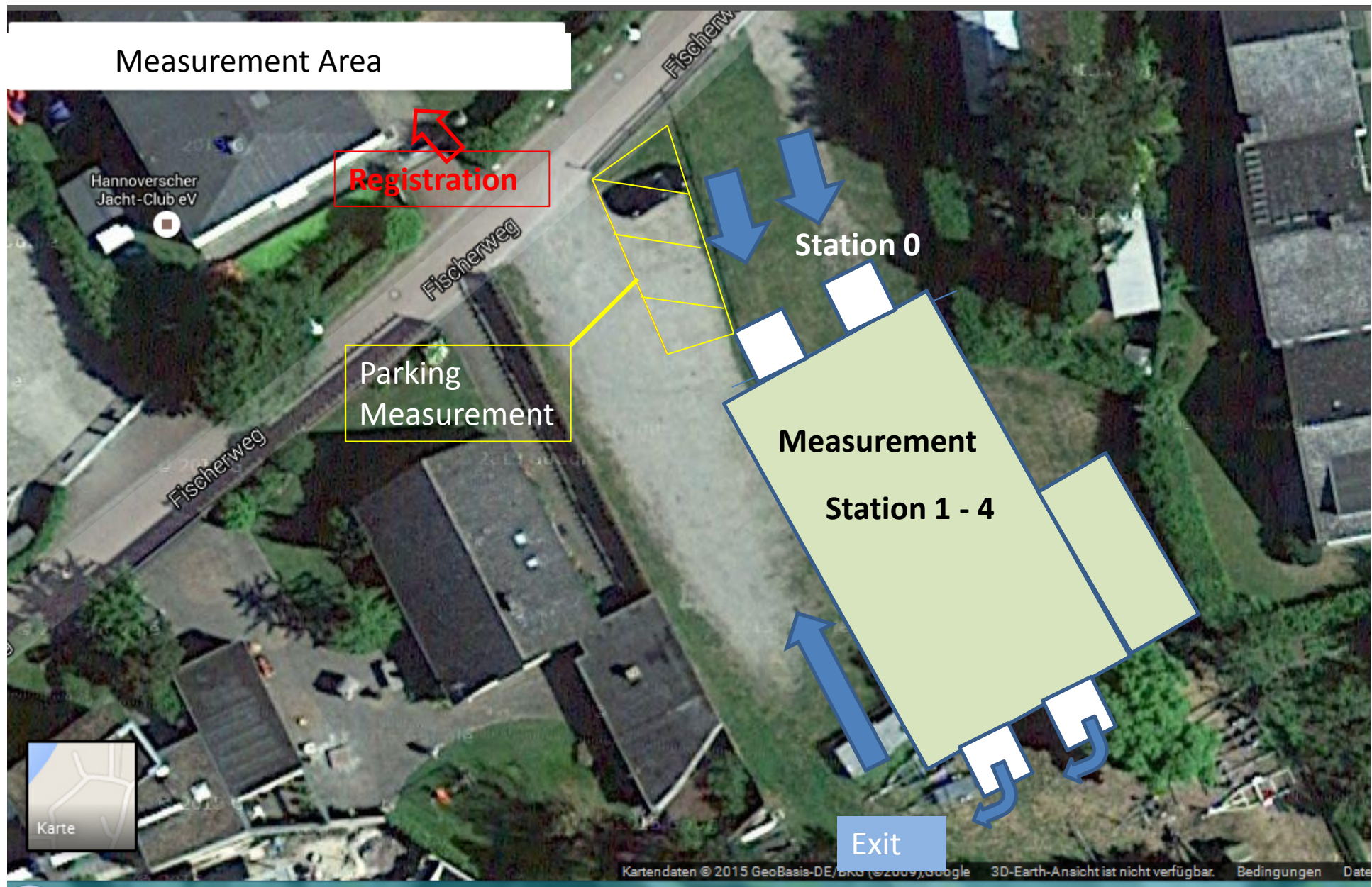


# Measurement Arrival

- Arrival of non-local competitors at Ohlendorpsweg, no stopping area - with exemption for competitors
- Unhook trailers, car parking to the right on Fischerweg, Am Gosebrinke, Parking Badeinsel (see  sign) etc.
- Motorhomes/tents to place at SLSV, s. map; or to chosen campsites
- Trailers go left into Fischerweg - HYC
- Unloading, boat onto trolleys
- Preparation for measurement as indicated in the measurement instructions; to keep her dry/in case of rain recovering the boat
- Trailers' transport by assistants to designated parking lot



## Measurement Area



# Measurement Registration

Competitors see **registration office** shortly after arrival and **before** entering the measurement area :

- Present their valid IFDCO membership cards (2)
- Show the IFDCO measurement certificate
- Proof of third-party liability insurance

Competitors receive a bag containing e.g.

- Bow numbers
- Measurement instructions
- Measurement sheets (4)
- Fill personal data into the grey square of sheet 1
- Enter boat number on the sign-up sheet at tent entrance



# REGATTA INSPECTION SHEETS

**FD WORLD CHAMPIONSHIP 2016**

Hannoverscher Yacht-Club e.V., Steinhuder Meer, GERMANY

Thursday 19th to Saturday 28th May 2016



Sail #

Bow #

## IFDCO INSPECTION SHEET 1/4

SECTION TO BE COMPLETED BY THE HELM/CREW & given to IFDCO Registration Desk with your Boat Papers

Helm: \_\_\_\_\_ kg \_\_\_\_\_ cm D.O.B. IFDCO member # \_\_\_\_\_  
 Crew: \_\_\_\_\_ kg \_\_\_\_\_ cm D.O.B. IFDCO member # \_\_\_\_\_  
 Boat Owner, if not helm: \_\_\_\_\_ Certificate Sail Nr: \_\_\_\_\_  
 Boat: Builder \_\_\_\_\_ Build: year/month: \_\_\_\_/\_\_\_\_ ISAF Number: \_\_\_\_\_

### STATION 1: CHECK-IN and STATION 5: CHECK-OUT

Rule:

CORRECT  
No Yes

9.1	Current IFDCO year sticker on Helm & Crew cards		_____	_____
8	Measurement Certificate + Form		_____	_____
7.1	ISAF Sticker on Hull same as certificate/officially altered		_____	_____
42	Corrector weights as per Measurement Form _____ kg		_____	_____
113	Equipment check-in-out	Check-in	Check-out/ Sticker/Stamp	
	HULL			
	1 Hull (DRY)		_____	1 _____
	1 Centre board	max	_____	2 _____
	1 Rudder	max	_____	3 _____
	SPARS			
	1 Mast	max	_____	4 _____
	1 Boom	max	_____	5 _____
	2 Spinnaker poles	max	_____	6 _____ 7 _____
78	2 Paddles (1m / 0.250kg)	max/min	_____	8 _____ 9 _____
78	1 Towing line (15m, 8mm, 0.5kg)	min	_____	_____
78	2 Personal Buoyancy Aids, 50 N approved standard		_____	_____
	SAILS			
	1 Mainsail		_____	10 _____
	2 Genoas		_____	11 _____ 12 _____
	1 Spinnaker		_____	13 _____
49	TRAPEZE HARNESS			
	Weight (max. 4.0 kg)		_____	_____
	Floats (yes)		_____	_____
	Hook Release (max release time 2s)		_____	_____

### Owners Declaration:

All the above mentioned sails and equipment have been marked with the official "Event" stamp, sticker and no other equipment or sail will be used in this championship (except with written permission given by the Jury Chairman). I have checked that all the 9 stickers and 4 sail stamps are present on the equipment and accept the responsibility of maintaining them for the duration of the event.

The skipper's Signature:

Date...../May/2016

### REGATTA INSPECTION COMPLETE

Certificates Hull Spars & Equip Sails  
 STATION 1 \_\_\_\_\_ STATION 2 \_\_\_\_\_ STATION 3 \_\_\_\_\_ STATION 4 \_\_\_\_\_

17.11.2015

Vermessung WM 2016 HaWe

6

# Measurement Station 0

1. Entire crew accompanies the measurement procedure (as described in the "Measurement Procedure")
2. The boats line up in two parallel queues within the measurement area up to the entrance door of the tent,
3. Boat **totally dry**, with her entire racing equipment, sails - the genoas rolled from the top with the open foot to ease the stamping; mast and boom must have correct painted band marks, uncovered; loose centre board; uncovered rudder; open buoyancy tanks etc.
4. Bow numbers put on by the crew with the assistance of the measurement team
5. Competitors pull their trolleys throughout the measurement stations



# Measurement

## Station 1, Check-in, sheet 1

1. Helm presents valid IFDCO membership cards, measurement certificate & measurement form and the inspection sheets 1 -4 at the measurement registration desk to the Registrar
2. Registrar proves ISAF sticker (same as certificate?) and
3. Corrector weights (same as measurement form?)
4. Measurement assistants take over the sheets 1-4 from Registrar
5. Check hull (dry?, check tanks, sheets),
6. Equipment (complete?): centre board , rudder, mast, boom, poles, paddles, towing line, buoyancy aids, trapeze harness
7. Sails (4): 1 main, 2 genoas, 1 spinnaker. **After** the check-in sails go directly to the sail measurement desk, done by crew
8. Proof of paddles, towing line, buoyancy aids, trapeze harness
9. Crew moves boat to Station 2, **after** column 1 (check-in) has been signed



# Measurement

## Station 2, Spars & equipment, sheet 2

1. M. assistant measures deckline to mast step ( shoulder or plug) = **upper edge of band 1**
2. Mast and boom go onto the measuring table
3. Mast: Proof **band distances**, spi pole **mast fitting**, **bearing point** spi halyard
4. **Weight of mast** ( no hooks or compass, min 8.5 kg)
5. **C.G. of mast** (min 2500 mm from band 1)
6. Boom: **band from mast** (2840 mm), boom stop, **loose foot strap** (60 mm)
7. Spipole(s): **length** (max 2500 mm)
8. Centre board: **weight** ( max. 5.5 kg) and **shape**
9. Rudder: **weight** (min 4.0 kg) and **shape**
10. The equipment goes to the end of the tent( floor), done by crew
11. Crew moves boat to Station 3

# Measurement

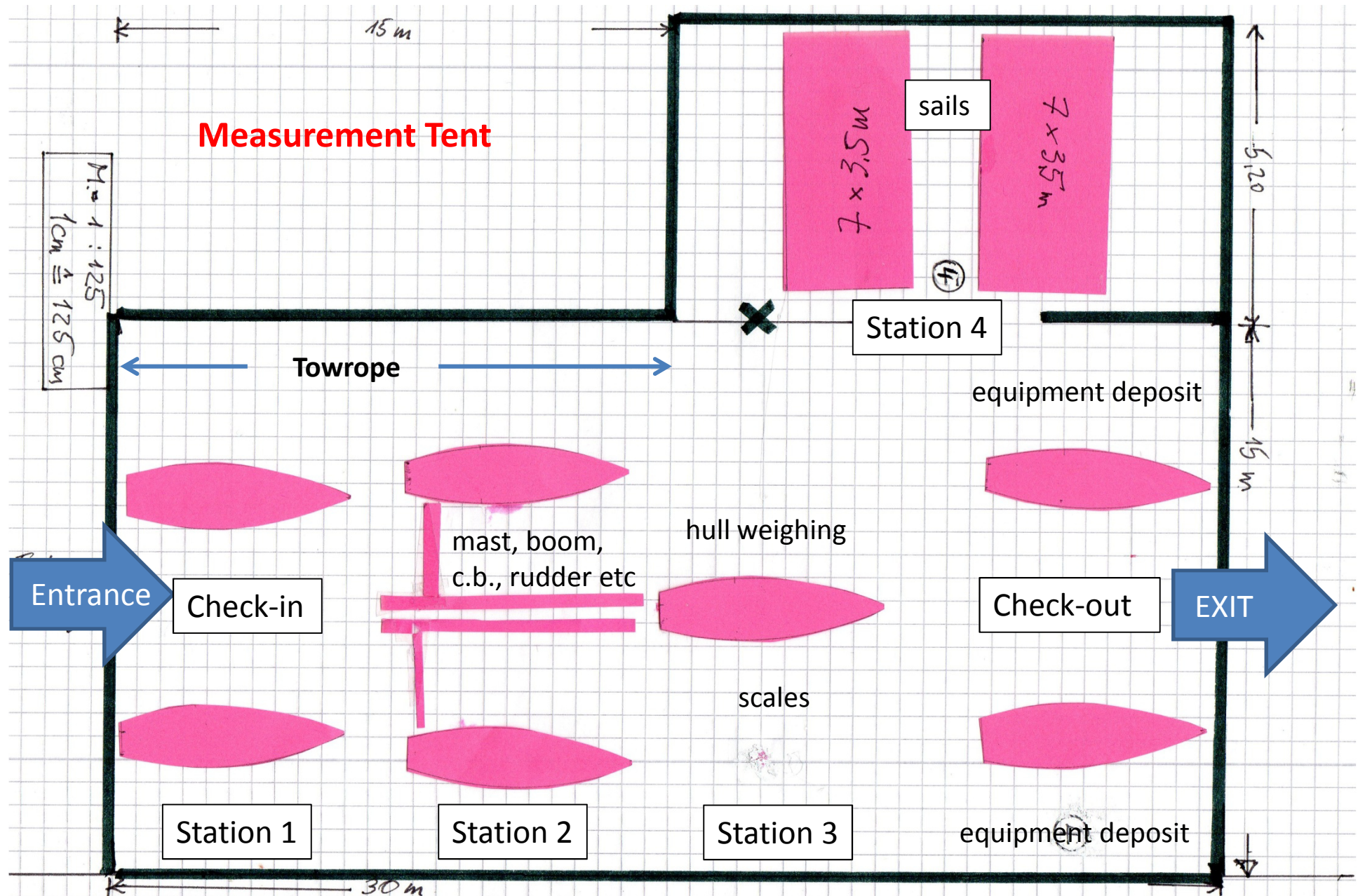
## Station 3, hull, sheet 3

1. Centre board plate, tank lids, sheets remain in the boat
2. M. assistants attach claws to the gunwales, lift the boat for **weighing**
3. Measurer **records** the scales' reading and **decides** about correctors
4. Proof of correct **boat numbers**, **advertising** (if allowed by SI), **forestay**
5. Proof of **non-travelling** mast heel and shrouds
6. Check aftside of **jib bearing**(band) to transom (min. 2000 mm)
7. Check **jib bearing** point above upper side of deck (max. 60 mm)
8. Rudder **safety device** , **sail number** on transom (min 30 mm)
9. Crew assembles equipment back onto the boat
10. Crew fetches the sails from the sail measuring area
11. M. assistants present the collected sheets 1-4 to the Chief Measurer
12. Helm signs the **owner's declaration**
13. Chief Measurer marks the **check-out**, signs off or asks for remeasurement

# Measurement

## Station 4, sails, sheet 4

1. Sail measurement runs parallel to Stations 1 - 3
2. Crew assists the measurement procedure
3. **Main:** crew takes the sail out of the sail bag, unrolls it on the m. desk
4. Proof of red sail button; check of leech length, top width, top batten
5. After stamping crew puts sail back into the bag
6. **Genoas (2):** crew takes the sail's foot out of the bag
7. Proof of red sail buttons
8. After stamping crew puts sails back into the bags
9. **Spinnaker:** crew takes Spinnaker off the bag
10. Proof of red sail button; check luff & half foot length, foot meridian, width
11. After stamping crew puts sail back into the bag
12. Measurer signs sheet 4
13. Crew takes the sails to the boat, behind Station 3





**Competitor's List For Measurement Inspection**

**Thursday 19 May 2016 to Saturday 21 May 2016**

**Thursday 13:00 to 19:00 Friday 09:00 to 19:00 Saturday 09:00 to 19:00**

**RETURNS FOR REMEASUREMENT AT 16:00 ONLY PLEASE**

	BOAT NUMBER			BOAT NUMBER
9:00	FD			FD
	FD			FD
	FD			FD
10:00				
11:00				
12:00	Break			Break

**Example for  
measurement list**