



2024 FD World Championship Proposal

To be determined:
March – April timeframe of 2024



S
P
Y
C



BID REGATTA PACKET CONTENTS

- Introduction - Facilities & Amenities
- Accommodations & Local Details
- Race Management/Locations
- Sailing Conditions in Tampa Bay
- Additional Information & Media Communications
- Entry Fee & Sponsorship
- SPYC Contact Details



The St. Petersburg Yacht Club
is pleased to submit a bid to host the -

2024 FD World Championship Proposal

.....

Founded in 1909 and prominently situated as the centerpiece of downtown's sparkling waterfront, the St. Petersburg Yacht Club has remained a landmark venue for the area's yachting and social scene for more than a century. SPYC not only offers direct water access, it also is in close proximity to hotel accommodations, world class cuisine, medical facilities, airports, and entertainment venues. Sailors have represented the SPYC in world events including the *America's Cup* and the *Olympics*.

Sailors can take advantage of these amazing facilities & amenities:

The main ***Downtown Clubhouse*** is surrounded by two parks, the municipal marina, SPYC marina, and an attached private parking garage. The Clubhouse includes multiple dining outlets, private function rooms, conference rooms, a full-service lounge, and outside patio/dining areas. There is a swimming pool on the upper deck of the Clubhouse with an adjacent full-service Tiki Bar. This deck overlooks the waterfront and is an ideal place for an informal gathering or even a cookout. On the weekends LIVE music is offered at the Tiki Bar and inside at the Lounge.

Our second clubhouse, ***SPYC @ Pass-a-Grille***, is located just a short driving distance away on the Gulf of Mexico nestled within the Pass-a-Grille Beach community. This Clubhouse (also referred to as the "Beach Club") offers an inside dining room and full-service lounge, pool (with poolside service), private parking, and waterfront dining on the deck.

The ***St. Petersburg Sailing Center (SPSC)*** is located just a block from the main Clubhouse downtown (across from Demen's Landing) and is city-owned, SPYC staffed and managed, and has a secured access to the Club and marina. In addition to these facilities there is a club-owned marina on Snell Isle, located three miles north of the main Clubhouse.

The St. Petersburg Yacht Club has plenty of room to accommodate your event or if you are in need of a meeting space. Our talented Catering professionals have many years of experience planning regatta events of all sizes and types. Catering also offers an extensive banquet menu to accommodate your sailors tastebuds.



The SPYC downtown Marina - located across from the main Clubhouse pictured to the left - lounge by the pool with a drink from the Tiki Bar or dine in the Grille 1909 for dinner.



SPYC @ Pass-a-Grille - also referred to by our members as "The Beach Club" - conveniently located just a few blocks from the Gulf of Mexico.



SPYC specializes in event planning for all types of gatherings - especially regatta events. From food, to decor, music and more our catering experts will help you create your ideal gathering.

Welcome!

On Location in St. Petersburg, Florida

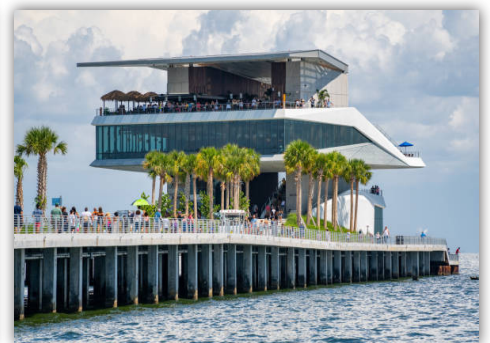
Prestigious World Class competitions demand to be hosted at destinations of a fitting caliber. Since the new millennium, St. Petersburg has emerged as a top vacation destination, but also a beacon for growth in arts and technology.

More than 900 events bring over 10 million people each year to the sunshine city to experience yacht races, triathlons, baseball, basketball, cycling, festivals, cultural exhibits, and music. The city boasts seven (7) museums, a state university, ten (10) marine institutes, more than a dozen galleries, and the *All Children's Research Center*, which all highlight the city's commitment to education and healthcare.

Area Attractions:

While you are visiting why not take advantage of all St. Pete has to offer? From white-sand beaches with crystal-clear water, to a foodie and arts scene praised by *Travel & Leisure* - in the St. Petersburg area the options are endless!

- Variety of fine-dining and casual restaurants, cafes, and bars are in close proximity to the Club along Beach Drive and Central Ave, which leads into the heart of downtown St. Pete
- Fine Art & Cultural Museums which include the famous Salvador Dali museum
- Visit the newly rebuilt St. Pete Pier - in walking distance of the yacht club
- Go for a shopping adventure in downtown and enjoy many diverse shopping outlets
- Conveniently located, within walking distance of SPYC & SPSC, is a Publix & CVS Pharmacy
- Make it a beach day! St. Pete Beach & Pass-a-Grille is located within a 15-20 minute drive
- Local transportation is available in downtown via the St. Pete Trolley, hotel shuttles, and numerous bike share locations - for those wishing to rent a bike and ride around town
- Other area attractions include an AMC Movie Theater, The Mehoff Theater, Downtown Biking Tours, Craft Beer Brewery Tours, a plethora of lively nightlife venues and much more waiting to be explored!



Accommodations available for Sailors in Downtown St. Petersburg

(*) SPYC has special guests rates

***Hampton Inn & Suites:**

Located in the heart of downtown, and directly across the street from SPYC on Beach Drive, this hotel gives you a front row seat to all of the action in downtown.



***Hilton St. Petersburg Bayfront:**

Conveniently located off 1st Street SE, this hotel places you a short walking distance from SPYC & SPSC, and all that the downtown area has to offer - enjoy great views of Tampa Bay and the city from your guest room.



***Marriott Courtyard:**

Enjoy your stay at this hotel in downtown located just a few minutes driving distance from SPYC and SPSC, off of 4th Street North.



The Renaissance Vinoy:

One of St. Petersburg's most unique and historic hotels. After your day of excitement - both on and off the water - retreat to this resort and relax in their stylish guest rooms, or take advantage of their many resort amenities.



Campground at Fort DeSoto Park:

Looking to lodge outside of the city and enjoy Florida nature? Then consider the beautiful waterfront campground inside of **Fort DeSoto Park**. Located within 20 minutes of SPYC & SPSC.



Tampa International Airport (TIA) is the major airport servicing the Tampa Bay area, and is roughly 30 minutes from SPYC. Majority of car/van rental companies are inside the airport, including the **Super Shuttle** service. Additional airports nearby include: St. Pete/Clearwater (PIE), and Sarasota (SRQ).

Race Management

The SPYC runs major events every year during our primary racing season (October-April). We have a large number of well-trained, highly experienced, certified PROs and Judges on staff. We annually organize the *Lightning* and *Thistle Midwinter Championships*, the *Sailing World St. Petersburg NOOD Regatta*, and a number of PHRF and off-shore events - including our annual international race to Mexico....the *Regata del Sol al Sol*.



The SPYC has also hosted events, including:

- J/70 Worlds 2023
- US Adult Sailing Championship for the Mallory Cup 2017
- Contender World Championship April 2012
- The Snipe Women's Championship 2010
- Sunfish State Championship 2011
- Sunfish World Championship 2012
- Rolex ISAF Women's World Match Racing Championship & the Rolex Women's Match 2002-2009
- Prince of Wales Bowl (US National Championship 1999, 2004 & 2009)

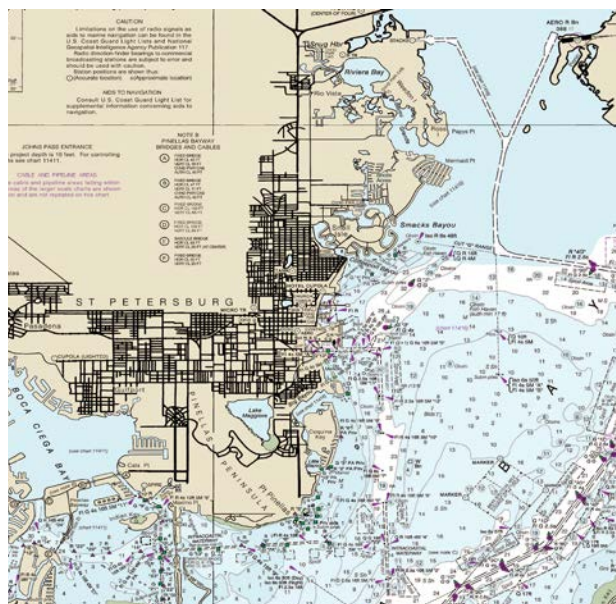
SPYC has ample RC, mark, and safety

boats available to be utilized for your event. In addition, if desirable SPYC can arrange for spectator boats or powerboat charters for on the water viewing. The new Pier is also a desirable viewing location for guests. We also have a full-time Race Director with National Race Officer Certification on staff.

Race Locations

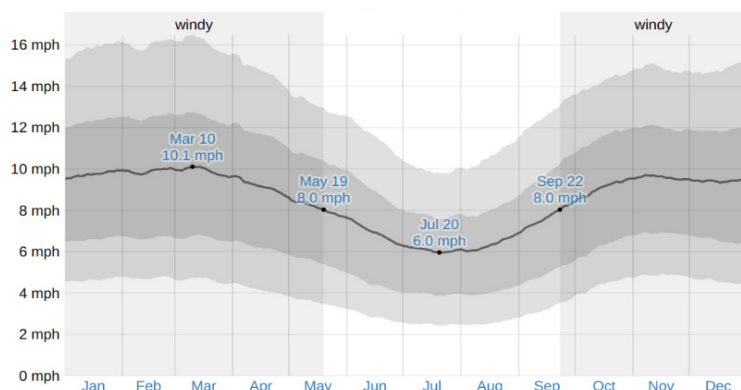
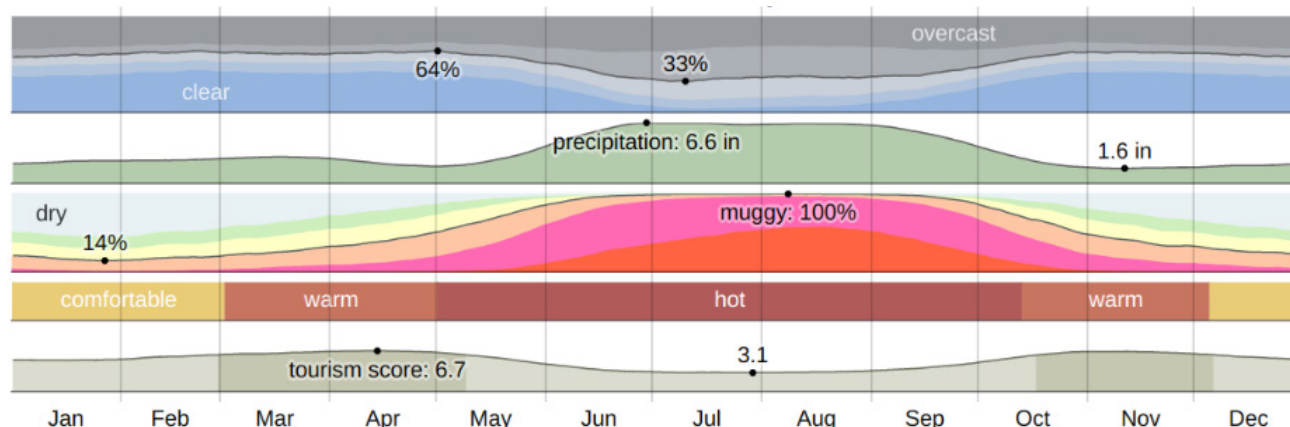
There are numerous course options available for sailors throughout Tampa Bay, based on best conditions. The SPYC is dedicated to delivering the best location and staff for the event.

Launch Area: Sailors will launch their boats from the SPSC. There is sufficient room for every sailor. The facility has three hoists, three ramps, and ample dock space for all.

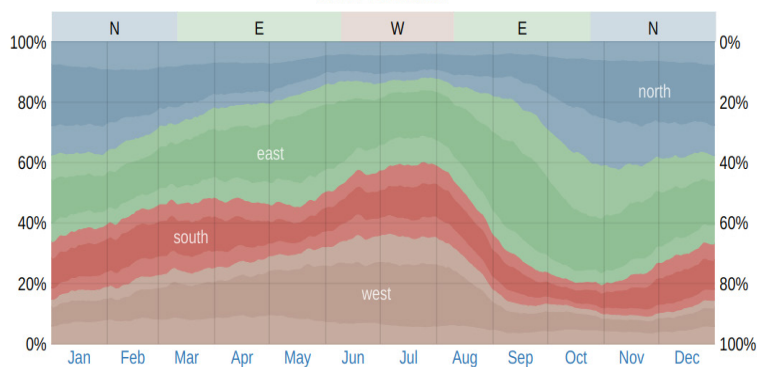


Annual Tampa Bay Weather Conditions

Climate Summary: Typical weather conditions in the Spring - average daily temperatures for this time of year range from low 60's to high 80's, with average winds between 7-10 knots. (Information taken from Albert Whitted Airport located adjacent to the St. Pete Pier)



Wind Speed: Windier part of the year (7.9 months): September 22 to May 19 - avg speeds >8.0 mph. Avg windiest day: March 10 - average wind speed of 10.1 mph. Calmer part year (4.1 months): May 19 to September 22. Avg calmest day: July 20 - average wind speed of 6.0 mph.



Wind Directions Over the Entire Year:

The percentage of hours in which the mean wind direction is from the north, east, south, and west. The lightly tinted areas at the boundaries are the percentage of hours spent in the implied intermediate directions (northeast, southeast, southwest, and northwest).

Additional Information

- SPYC has Wi-Fi for guests and at both the Club and Sailing Center and there are restrooms with showers available for both male and female sailors.
- The SPSC is a fenced and secured property where gates are locked nightly and monitored by SPYC Security and Marina staff.
- Coach boat charters are available through local sailors.

Media Communications:

- Race results are posted in real-time through **Yacht Scoring** and uploaded on the SPYC Regatta web page at www.spyc.org.
- Race updates & media coverage is shared on the SPYC website and social media platforms.
- SPYC also has the ability to staff a full-time on the water media team to provide coverage through social and print media.

SPYC Contacts

Regatta General

Dr. Jody Abrams

Jody_Abrams@yahoo.com

Main Downtown Clubhouse

11 Central Ave

St. Petersburg, FL 33701

(727) 822-3873

Pass-a-Grille Clubhouse

2301 Pass-a-Grille Way

St. Pete Beach, FL 33706

(727) 360-1646

St. Petersburg Sailing Center

250 2nd Ave. SE

St. Petersburg, FL 33701

(727) 822-3113

Sailingcenter@spyc.org

Principal Contacts - US FD Class

Douglas Dommermuth

US FD Class President

douglas.dommermuth@icloud.com

Gerhard Panuschka

US FD Class Secretary/Treasurer

panuli5@yahoo.com

Lin Robson

FD member, SPYC

lin.robson@northsails.com

Paul Hemker

FD Technical

hemkerpaul@gmail.com

Job Sandberg

FD mentor/member

job.sandberg@gmail.com